



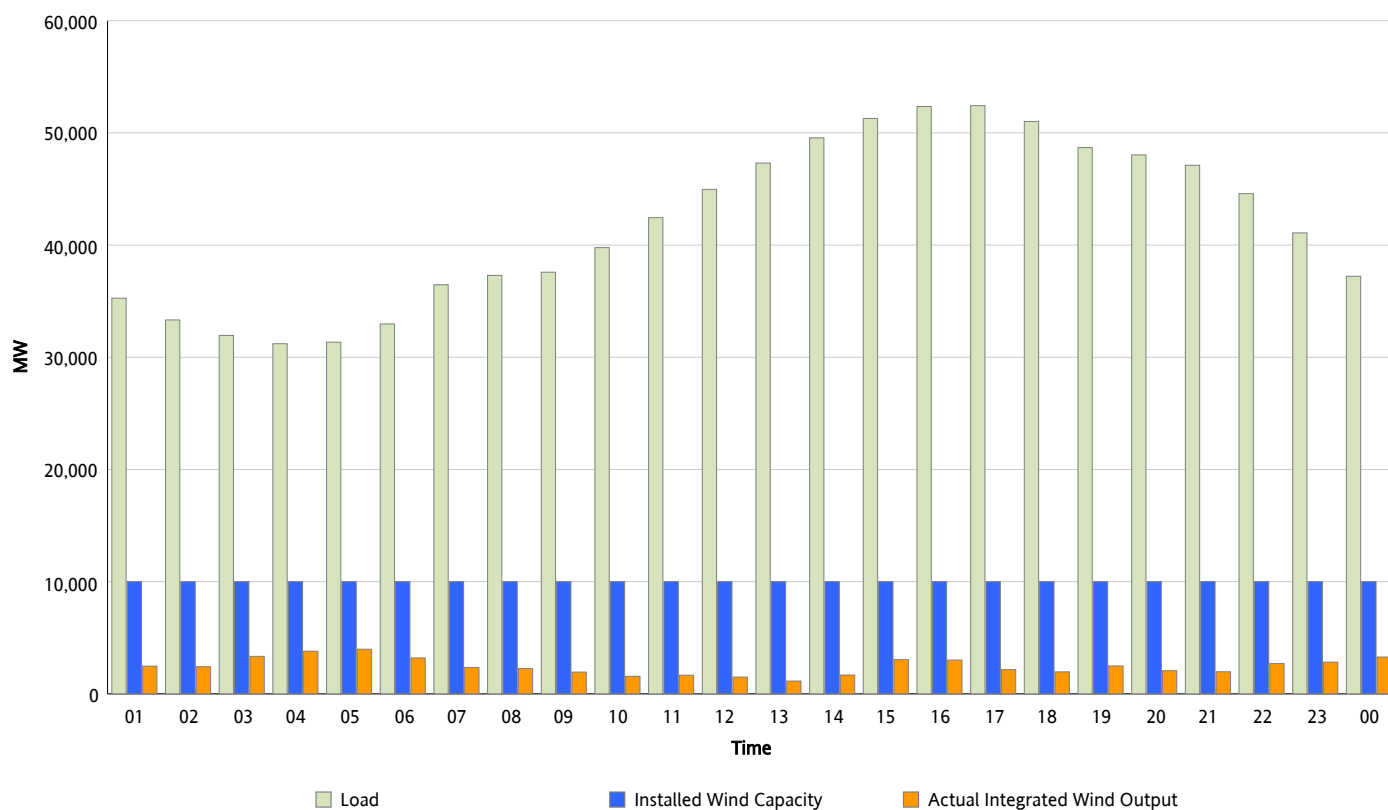
ERCOT Grid Operations

Wind Integration Report : 09/27/2012

Peak Load	52,429 MW
Load Peak Hour (HE)	17
Wind Over Peak	2,165 MW
Wind Record 06/19/12	8,368 MW
Max Wind Value*	4,078 MW
Wind Peak Time	04:38
Wind Integration %	12.95 %

Hourly Average Actual Load vs. Actual Wind Output

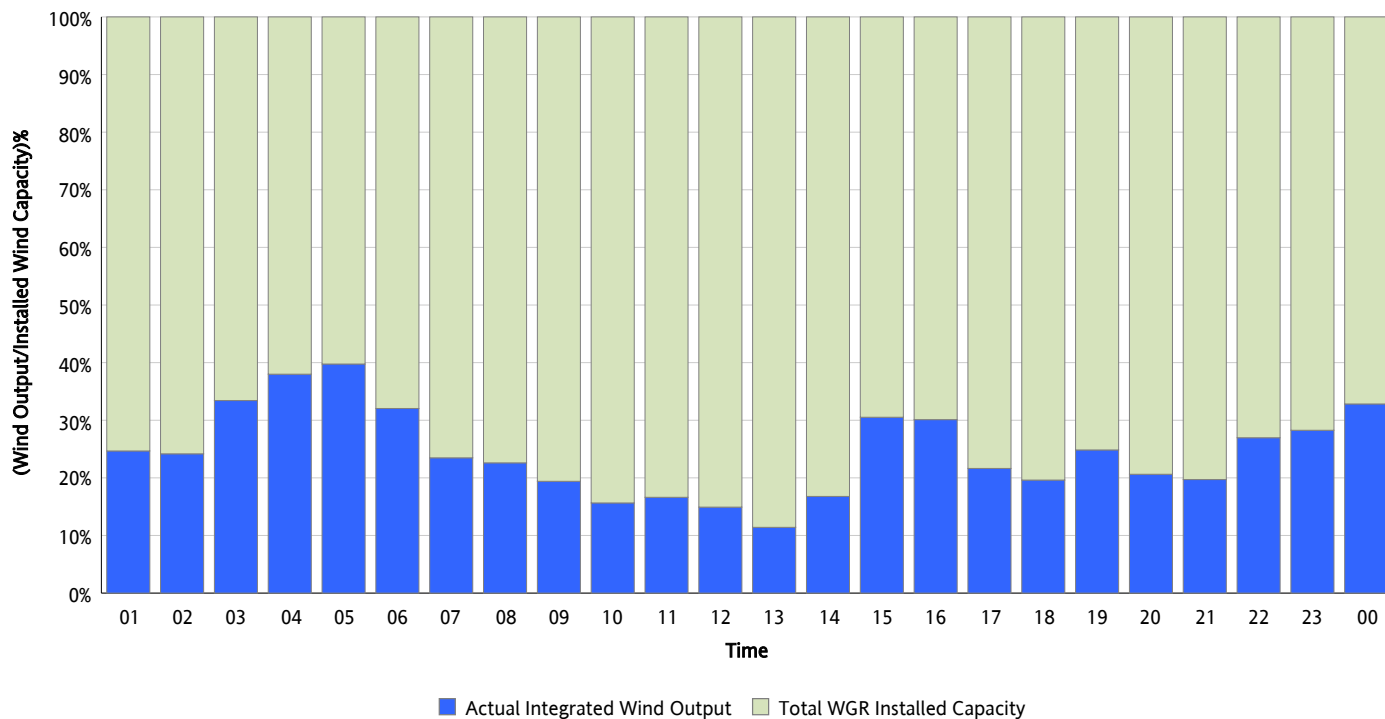
09/27/2012



* Wind Record and Wind Max represent instantaneous values and the rest of the values are integrated over the hour

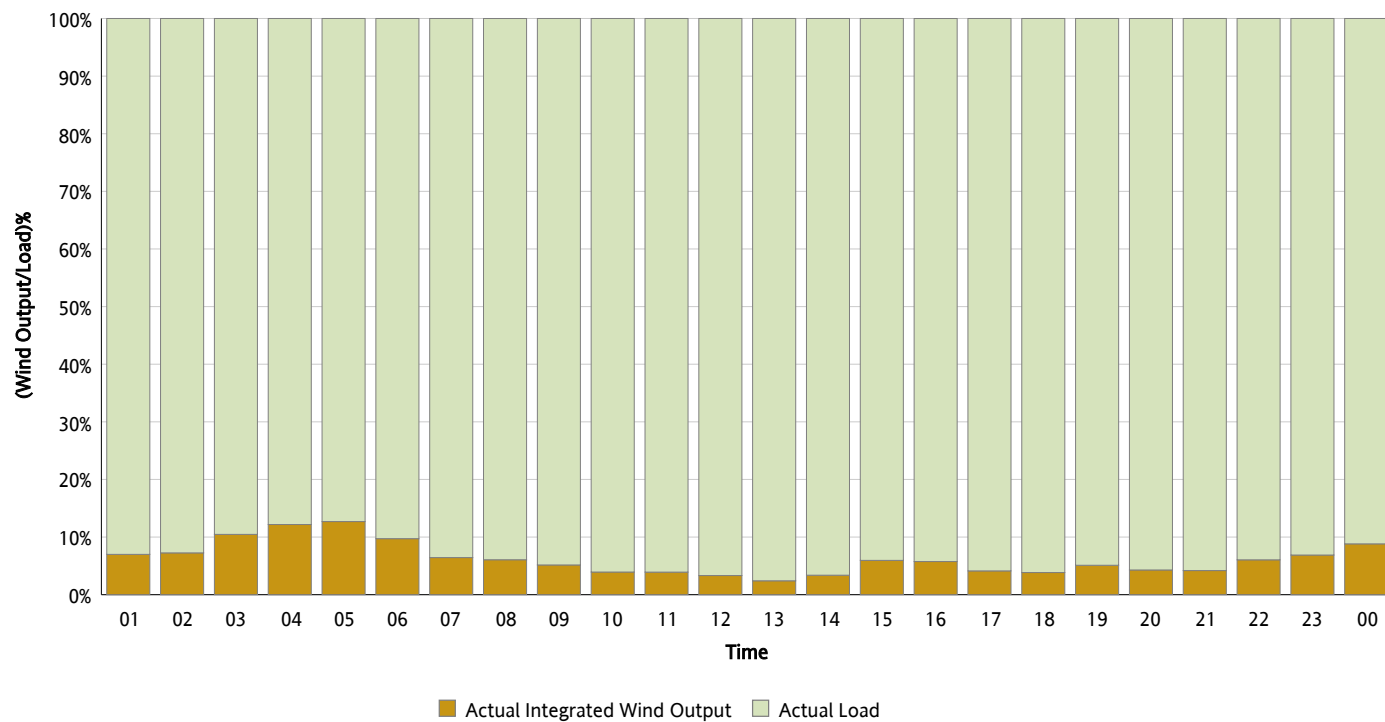
Actual Wind Output as a Percentage of the Total Installed Wind Capacity

09/27/2012



Actual Wind Output as a Percentage of the ERCOT Load

09/27/2012



ERCOT Load vs. Actual Wind Output

09/20/2012 - 09/27/2012

